



Jonathan Court, Windmill Road, London, W4 1SA

£550,000

WHITMAN & CO.

SALES · LETTINGS · COMMERCIAL

- Share in the freehold
- Allocated parking space
- Communal Garden
- Commanding views of Chiswick Common
- Fantastic location
- No chain

Tenure - Leasehold with Share of Freehold
 Lease Length - 953 Years Remaining
 Ground Rent - Peppercorn
 Service Charge - £2000 pa
 Local Authority - Hounslow
 Council Tax - Band D

THE PROPERTY

A light and spacious triple-aspect purpose-built flat with commanding views across Chiswick Common, ideally located close to numerous amenities. Featuring two double bedrooms, a white bathroom suite, a 19' dual-aspect reception room, a fully fitted kitchen, private allocated parking space, communal gardens, and a share in the freehold. Situated within close proximity to Turnham Green tube station and the extensive range of shops, bars, and restaurants on Chiswick High Road. No chain.

Jonathan Court, W4

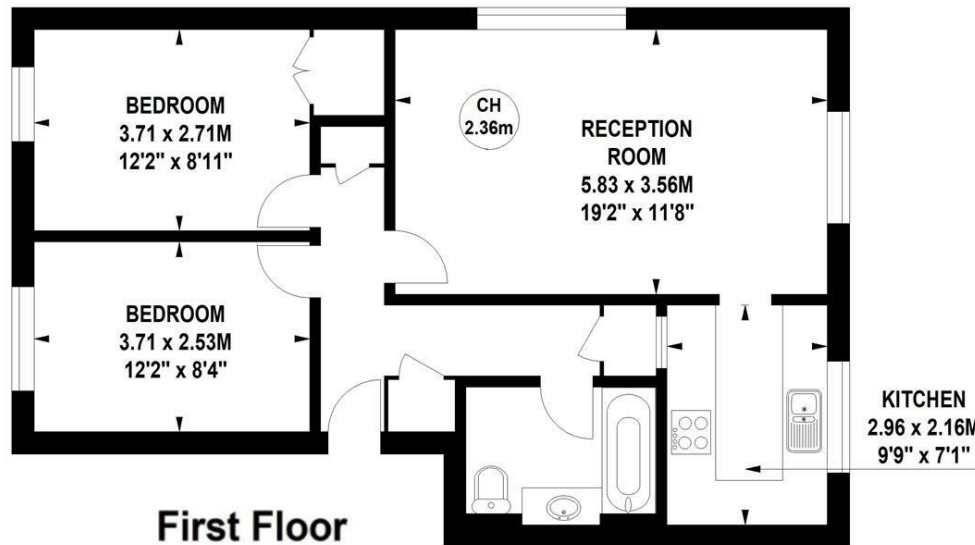
Approximate gross internal area

63.54 sq m / 684 sq ft

Key :
CH - Ceiling Height



(Not shown in actual
location / orientation)



First Floor

Not to scale, for guidance only and must not be relied upon as a statement of fact.
 All measurements and areas are approximate only

SITUATION



5-7 Turnham Green Terrace, Chiswick, London, W4 1RG

Tel 020 8747 8800

E-mail sales@whitmanandco.com

Website www.whitmanandco.com